

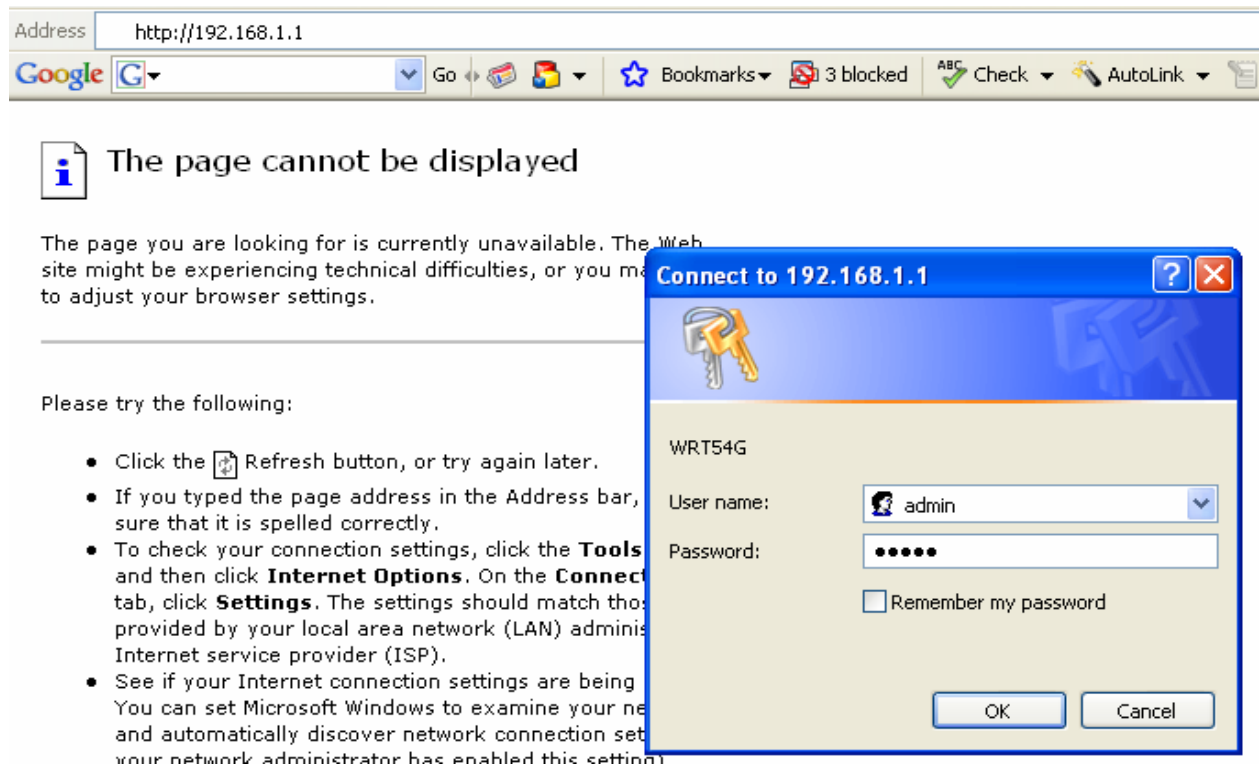
You must change the IP address that resides in the Linksys Router in order for it to work correctly with your Zhone Modem.

Step 1. Connect the Linksys router to your PC. Connect one end of the Ethernet cord into Port 1 on the back of the Linksys router. Connect the other end of the Ethernet cord into the Ethernet port on the back of your PC.

Step 2. Open your Web Browser (Internet Explorer, Mozilla, etc.). You will see “Page Cannot be displayed.” In the address bar of your Web Browser, type in 192.168.1.1. The screen below should appear.

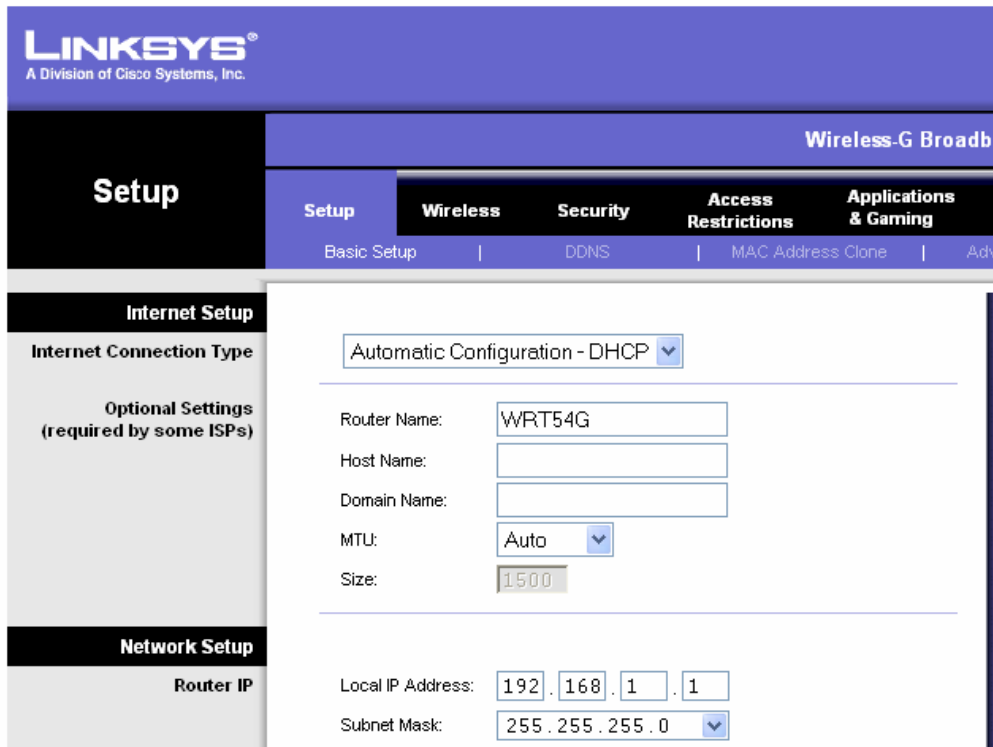
Step 3.  
Type in (all lowercase letters):  
admin  
admin

Press Ok.



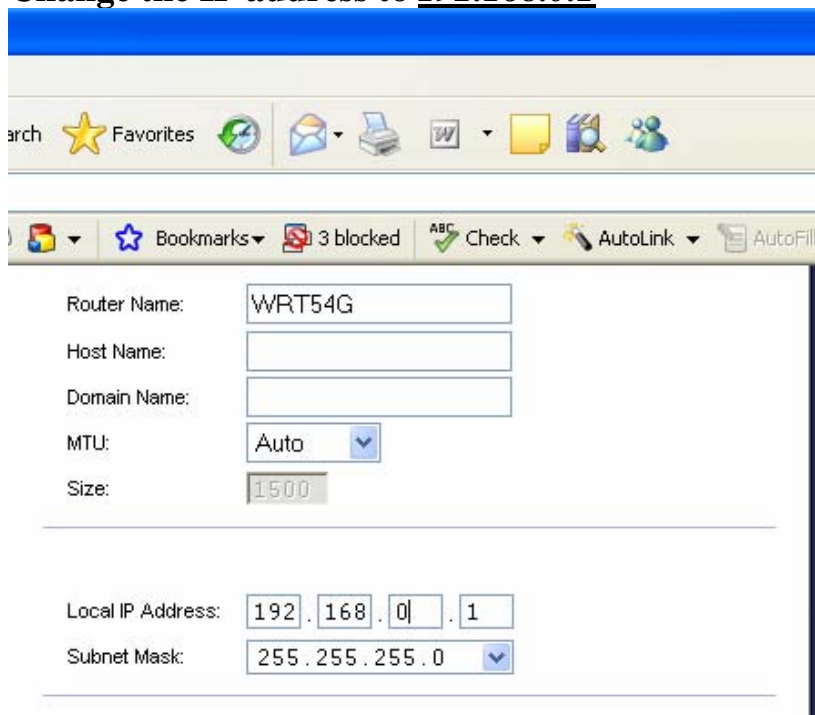
Step 4.

On the Linksys screen, you will see the “Local IP Address”.



The screenshot shows the Linksys Setup interface. The top navigation bar includes "Setup" and "Wireless-G Broadband". The "Setup" menu is expanded to show "Basic Setup", "Wireless", "Security", "Access Restrictions", and "Applications & Gaming". The "Internet Setup" section is active, showing "Internet Connection Type" set to "Automatic Configuration - DHCP". Below this, there are fields for "Router Name" (WRT54G), "Host Name", "Domain Name", "MTU" (Auto), and "Size" (1500). The "Local IP Address" field is set to 192.168.1.1, and the "Subnet Mask" is set to 255.255.255.0.

Change the IP address to 192.168.0.1



The screenshot shows the same Linksys Setup interface as above, but with the "Local IP Address" field changed to 192.168.0.1. The "Subnet Mask" remains 255.255.255.0. The browser's address bar and toolbar are visible at the top of the page.

**At the bottom of the page, press “Save Settings”, then press “Close” on the next screen.**



After you have changed the IP address in the Linksys router, you will need to connect the router to the modem.

If you need further instructions, please call the Internet Help Desk, 1-866-291-8261.