



YV-Drive Network Attached Storage

Version: 1.0

YV-Drive Network Attached Storage

How It Works

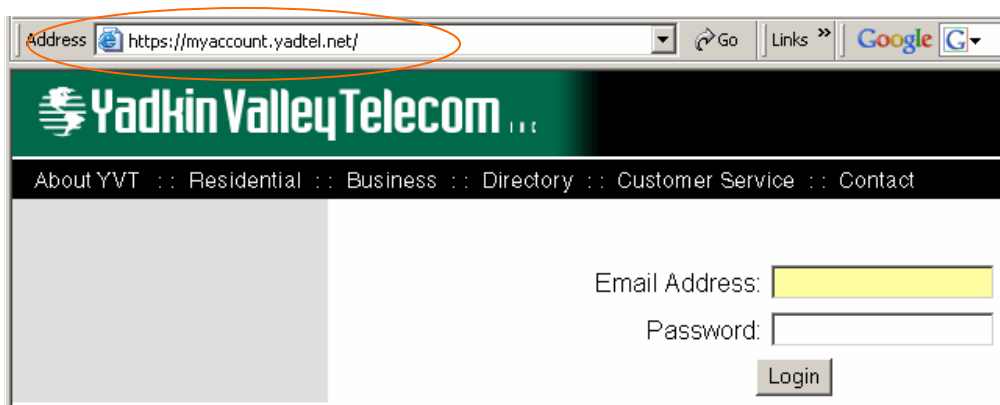
Network storage provides a safe and secure storage facility on a network server for storing text documents, photos, web pages, spreadsheets and other files. Yadkin Valley's YV-Drive product offering combines the security of network storage with the convenience of a local drive. Once YV-Drive is enabled, the network drive is accessible from within applications just like a local drive on your computer or work station. You can drag and drop or copy files to or from the network drive server using Windows Explorer or using DOS commands. YV-Drive allows secure transfer (Windows NT, 2000 & XP Oper Systems), storage and access for these files without having to learn a new application. Storing critical files on the network reduces the risk or impact of malicious attacks and viruses, hardware problems, accidental deletion and lost or damaged equipment.



System Requirements


Operating System: Windows 2000/XP
Processor: Pentium 1 or higher
Memory: 50Mb of available hard disk space
System RAM: 32Mb Minimum
Access: Internet access required (Minimum 56K recommended)
*Capacity: Determined by package/offering selection

Where to go to download the software

After calling Yadkin Valley Customer Service to subscribe to YV-Drive, go to myaccount.yadtel.net and login with your primary username and password. You may then download the software for YV-Drive. The program can be downloaded up to 5 times on other PC's or Laptops in the same household. You will need to use the primary username and password for each download and to access the drive.



Address  <https://myaccount.yadtel.net/> Go Links Google 

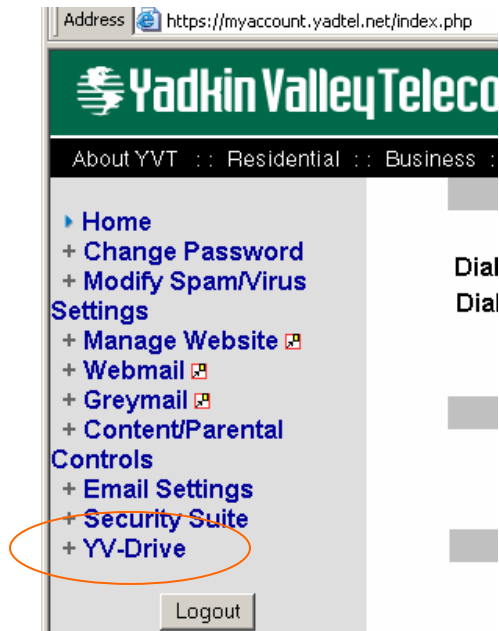


About YVT :: Residential :: Business :: Directory :: Customer Service :: Contact

Email Address:

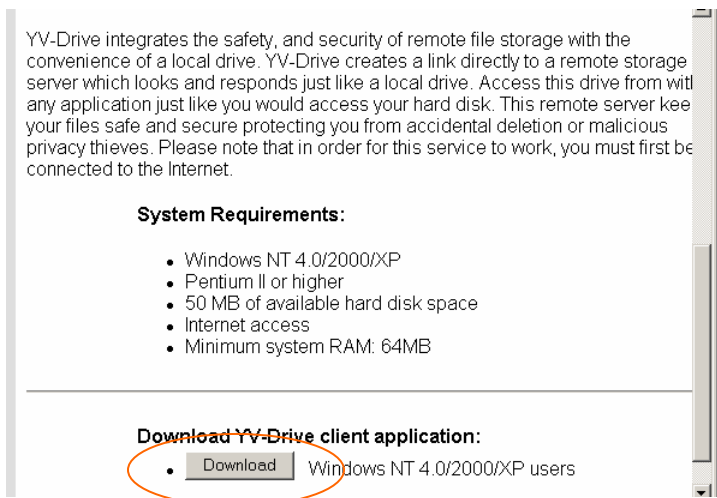
Password:

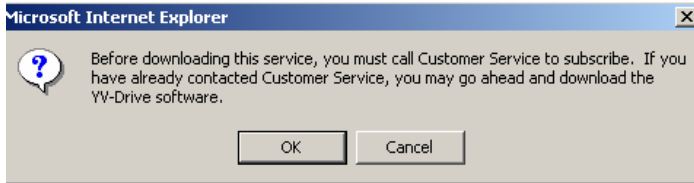
Login



Click on YV-Drive.

Users may wish to close any other open programs to prevent losing changes or experiencing conflicts associated with installing new software on their computer. A restart is required to enable the application when the install wizard has finished installing the program. Otherwise, the function will be available the next time the computer is started. To download the client program, users must click on the **Download** box associated with their Windows Operating System as shown below:





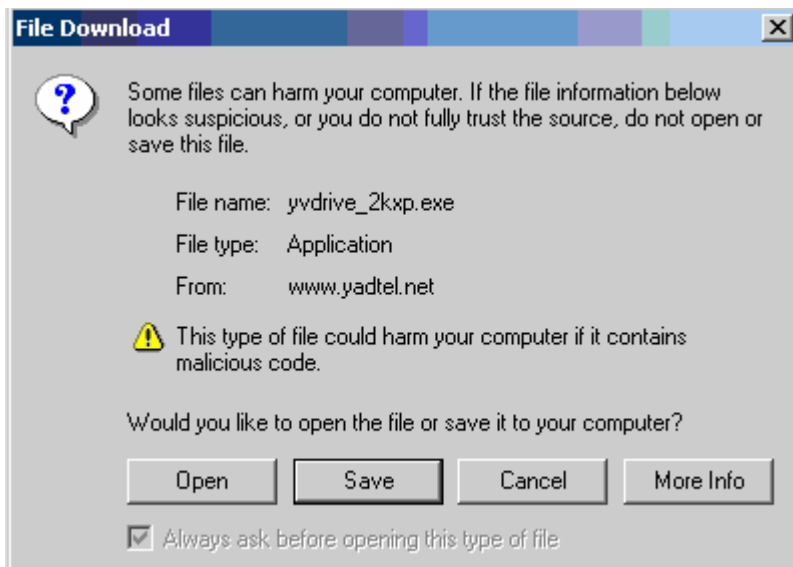
A pop-up message will appear to inform you that you must call Customer Service to subscribe to YV-Drive before installing.

Installing the YV-Drive client

After selecting the appropriate download box, users will be asked if they want to run or save the installer application. Select **Run** or **Save**. If **Run** is selected, the installer will begin and open the Install Wizard. If **Save** is selected, the installer file will be downloaded to the location specified in the **Save As** dialog box. Once saved, locate the installer application and double click on it to begin the install process.

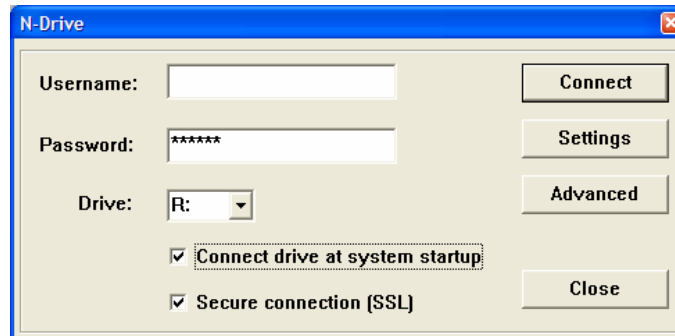
The Install Wizard will prompt users for the folder destination to install the network storage program files. The user can browse to select the folder for the installation and then click on Next to install or click on Cancel to exit the Install Wizard. The Install Wizard will load the program files to the destination folder and then install the program.

The Install Wizard will also create shortcuts in the Start Menu\All Programs\YV-Drive folder for "YV-Drive" and "Uninstall YV-Drive". Select the "YV-Drive" shortcut to run the program. The Uninstall shortcut is used to uninstall the program, should this be required.



Starting YV-Drive

When the YV-Drive program is initiated for the first time by selecting the program icon in the Start Menu Programs list, system tray, or double clicking the shortcut, the following screen is shown: (Your Userid will be displayed in the Username field.)



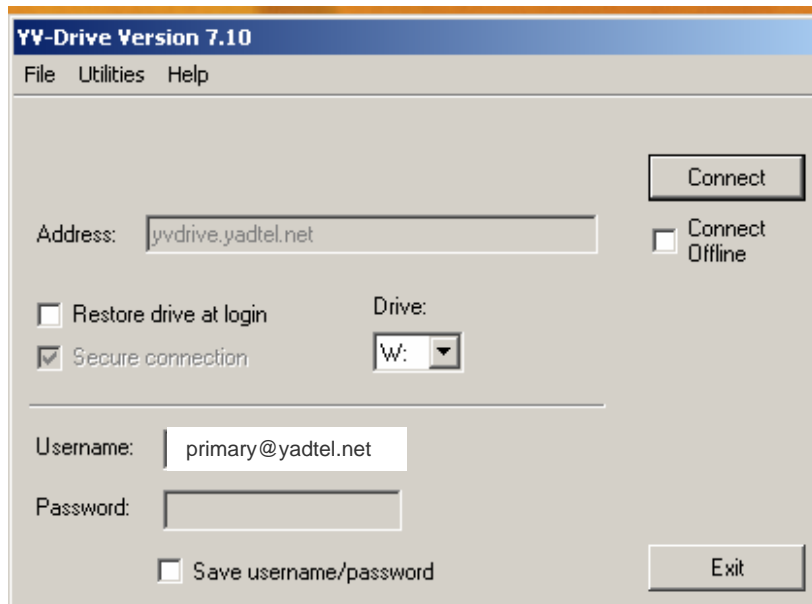
(File locations and naming conventions shown in screenshots are for examples only. Actual naming conventions may vary from actual screenshots on your system.)

This screen serves several functions including as detailed below:

- Allow access to network storage functionality through your full email username and password. (This functionality must be activated by Customer Service.)
- Selecting the Drive letter associated with the network drive from the drop down menu (Typically, letters D thru Z can be assigned as the drive designator.)
- Selecting whether you want the drive to connect at system startup by clicking on this checkbox. This will connect the drive each time your system starts or restarts.
- Select whether you want SSL (Secure Sockets Layer) protocol used in file transfers by clicking on this checkbox (SSL availability requires Windows NT/2000/XP)
- Access to General settings for the network storage application by clicking on the **Settings** tab (It is recommended to leave these settings at their default values.)
- Access to Advanced settings for the network storage application by clicking on the **Advanced** tab (It is recommended to leave these settings at their default values.)
- When the username, password, and drive letter selections are complete, and choices are made for Connection at startup, SSL encryption, General, and Advanced Settings, click on **Connect** to connect the network drive and finish the initiation of the program.

Using YV-Drive

Once the program is initiated, a screen will be displayed showing the network drive with its designated drive and the primary username.

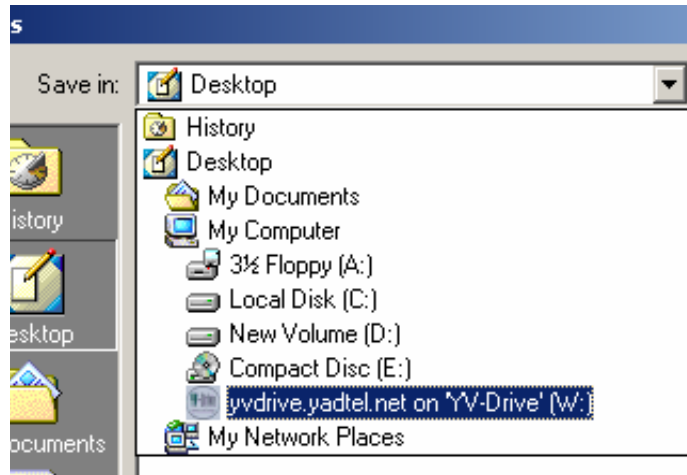


The screenshot shows the YV-Drive Version 7.10 application window. The title bar reads "YV-Drive Version 7.10" and the menu bar includes "File", "Utilities", and "Help". The main area contains the following fields and controls:

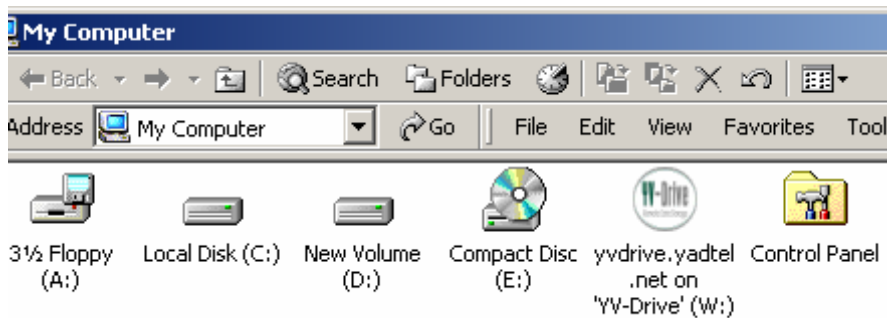
- Address:** A text box containing "yvdrive.yadtel.net".
- Connect:** A button located to the right of the address field.
- Connect Offline:** A checkbox labeled "Connect Offline" located below the "Connect" button.
- Restore drive at login:** An unchecked checkbox.
- Secure connection:** A checked checkbox.
- Drive:** A dropdown menu currently showing "W:".
- Username:** A text box containing "primary@yadtel.net".
- Password:** An empty text box.
- Save username/password:** An unchecked checkbox located at the bottom left.
- Exit:** A button located at the bottom right.

If users elect not to have the network drive connect on system start-up, they can connect the drive by selecting the **Start Menu, All Programs**, and the YV-Drive program icon from the program list to connect the drive. The same starting network storage connection screen above will appear. The username and password will already be populated and should not be re-input unless a change is required (Your Userid will be displayed in the Username field.) The same selections are available for Connection at startup, SSL encryption, General, and Advanced settings. Click on **Connect** to connect the drive.

The network drive will appear in most Windows applications when users select a **Save As** function and can be chosen as the target drive for saving files or creating folders. The network drive is available for file and directory manipulation using DOS commands. The network drive is also available for most search applications and will display folders or files matching the search criteria.



The network drive will appear when the user selects **My Computer** to display other hard disk drives and devices with removable storage (Hard Drive/CD/DVD/Floppy drives**). Files and folders can be "dragged and dropped" onto the drive icon to create copies of these files and folders on the network drive.



YV-Drive Program Controls

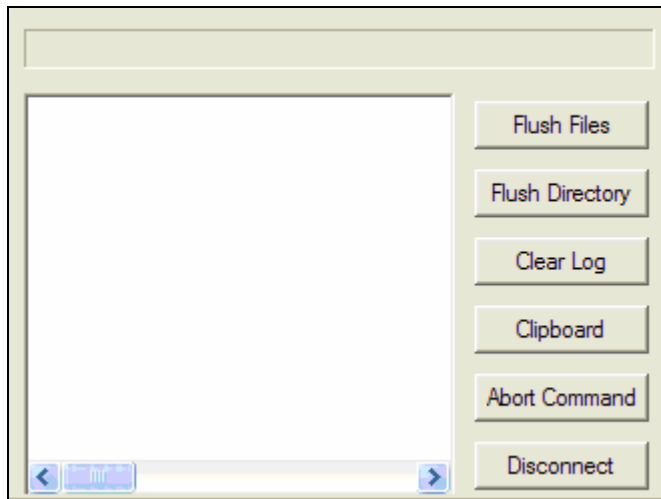
Once initialized, access to the network storage controls is achieved by right clicking the YV-Drive icon in the system tray toolbar. The following screen will be displayed:



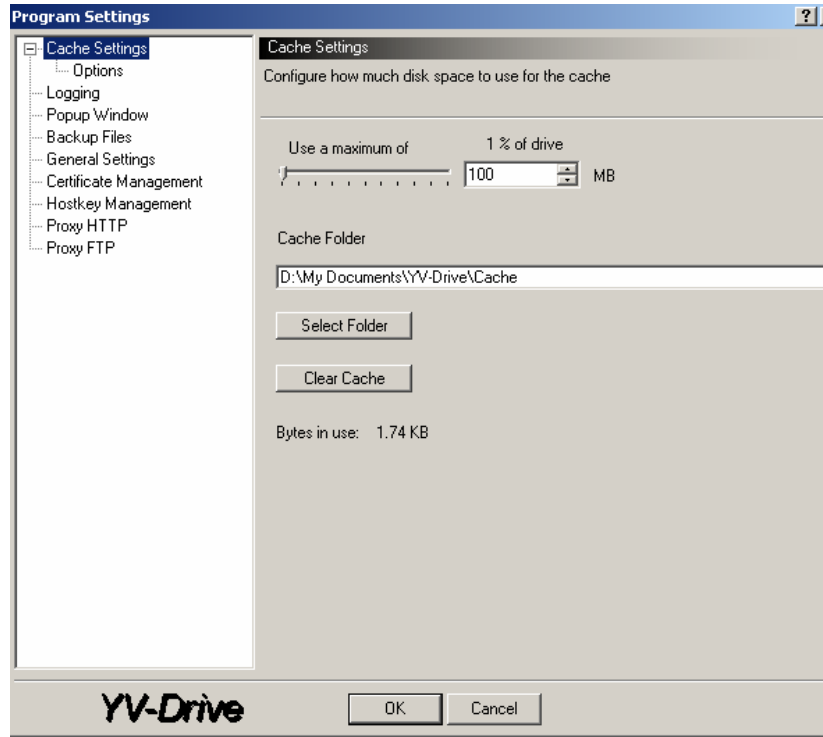
Selecting **Exit** will exit the program; however the drive will remain connected.

Selecting **Run at Startup** will connect the drive upon system startup in case users wish to change the selection that was made when the drive was initialized.

Selecting the **Show Monitor** tab will display a screen similar to the one below which displays a log of activities associated with the network drive and several drive control buttons, as well as one that will disconnect the drive when selected (**Disconnect**).



Selecting **Program Settings...** will display the program settings selection box shown below:



You can adjust the program settings to meet your specific file storage needs; however, it is recommended that only advanced users make adjustments to these settings.

Automated Backup Feature



YV-Drive can now be used to schedule automatic backups with the File Transfer Manager:

Right click on the YV-Drive Icon in the system tray and select **Open YV-Drive**.
Select **Utilities** from the upper left pull down menu and select **File Transfer Manager**.
When the File Transfer Manager screen opens, select **New** from the menu below.
The File Transfer Wizard will be activated and display several transfer operations.
Choose the Transfer Operation **Upload/Backup**, click next.
Browse your computer and Select the Files or Folders you want to backup by clicking the box to the left of the file or folders you want to backup (a check mark will appear), click next.
Choose to perform a **Full** (copy all files) or **Incremental** (copy only changed files) transfer.
Select or create the destination folder on the remote server for the FTP backup, click next.
Enter a name for the FTP backup and click finish.
The backup now appears in the File Transfer Manager backup list as shown below.
To schedule the backup, select **Schedule** from the menu.
Inside the schedule window, select **New**.
Choose to schedule the FTP backup to occur on a daily, weekly or monthly basis, click **OK**
You may be asked to enter and confirm your YV-Drive password.
Your backup is now ready to run at the scheduled time or can be **Run Now** if desired.

Restoring Files from Backup

If you wish to restore files from YV-Drive:
Open the Fire Transfer manager and click **New** to open the File Transfer Wizard.
Select the files or folders to restore.
Select **Full** or **Incremental** transfer.
Select a Name for the transfer and select **Run Now** or Schedule as shown above.

YV-Drive Pricing

The following pricing model has been established for YV-Drive users.

1GB	\$5.00 per month
5GB	\$15.00 per month
10GB	\$25.00 per month

We hope you find YV-Drive to be a safe, secure and convenient method of using network storage to reduce the risk of lost, deleted or damaged information.

A word of warning: If you decide to cancel this service, you will need to find an alternative back-up of the files on the YV-Drive. Once your service is disconnected, you will not be able to retrieve any files located on YV-Drive.

Call the Help Desk, 1-866-291-8261, for any technical questions concerning YV-Drive.